



## ISAF Sailing World Cup 2015

### NOTICE OF RACE & SAILING INSTRUCTIONS (NoR/SI)

To be supplemented by Round Sailing Instructions for each Round

Issued by ISAF 210915

Including Addendum D – Equipment for the SWC Final <sup>1</sup>

Event	Dates
ISAF SWC Melbourne	Concluded
ISAF SWC Miami	Concluded
ISAF SWC Hyères	Concluded
ISAF SWC Weymouth & Portland	Concluded
ISAF SWC Qingdao	Concluded
<b>ISAF SWC Final – Abu Dhabi</b>	27 October to 1 November

The Organizing Authority (OA) is ISAF in conjunction with the FFV, RYA, CYA or OCADSE respectively.

Documents governing the 2015 ISAF Sailing World Cup are available at ISAF Website

[www.sailing.org/world\\_cup\\_documents.php](http://www.sailing.org/world_cup_documents.php)

#### 1. RULES

- 1.1 The regatta will be governed by the rules as defined in The Racing Rules of Sailing (RRS).
- 1.2 The National Authority Prescriptions that will apply are stated in full in Addendum A of the NoR/SI.
- 1.3 RRS Appendix P, Special Procedures for Rule 42, will apply.
- 1.4 Decisions of the International Jury will be final as provided in RRS 70.5.
- 1.5 For Medal Races, ISAF Addendum Q, Umpired Fleet Racing, available on the ISAF website (<http://www.sailing.org>), will apply and changes a number of racing rules. A link to the version that is current when the regatta begins will appear in the Round Sailing Instructions (RSI).
- 1.6 The ISAF SWC Equipment Regulations (ER) will apply.
- 1.7 The ISAF SWC Support Team Regulations (including Coach Boats) will apply.
- 1.8 The ISAF SWC Competitors Media Guide will apply.
- 1.9 The 2015 ISAF SWC Qualification System will apply.

<sup>1</sup> Changes are highlighted in blue.



- 1.10 For the Men's Skiff, Women's Skiff, Mixed Two Person Multihull and Two Person Paralympic events, RRS 44.1 and RRS P2.1 are changed so that the Two-Turns Penalty is replaced by the One-Turn Penalty.
- 1.11 For SKUD 18 events, Class Rule J.4 will apply.
- 1.12 For Sonar events, this will be a Sonar Class Association Appendix B - Alternative Rules event.
- 1.13 For 2.4mR events, the 2.4 Norlin OD class rules will apply. However, Section K of the 2010 International 2.4 class rules will apply to boats that previously held measurement certification under Section K but do not yet hold certification under 2.4 Norlin OD class rules.
- 1.14 For Kiteboarding, the event format, scoring and any change to the rules are detailed in NoR/SI Addendum C. If there is a conflict between the Addendum C and these rules, the Addendum C will take precedence.
- 1.15 In all rules governing this regatta;

Both 'athlete' and 'competitor' mean a person competing in the event.

The term 'support team' means coaches, team leaders and other support personnel.

[DP] denotes a rule for which the penalty is at the discretion of the International Jury;

[SP] denotes a rule for which a standard penalty may be applied by the race committee without a hearing or a discretionary penalty applied by the International Jury with a hearing; and

[NP] denotes a rule that shall not be grounds for protests by a boat. This changes RRS 60.1(a).

- 1.16 If there is a conflict between languages the English text will take precedence.

## **2. [DP] ADVERTISING and BOW NUMBERS**

- 2.1 Boats may be required to display bow numbers and advertising chosen and supplied by the organizing authority.
- 2.2 Competitors aboard the boats ranked first, second and third in the series at the beginning of that day, shall wear yellow, blue and red bibs respectively while racing. All other competitors may be required to wear ISAF Sailing World Cup bibs. In addition, the organizing authority may require a coloured dot to be applied to the mainsail. The organizing authority will supply the bibs and coloured dots, and instructions for their use.
- 2.3 [SP] For Olympic events, boats shall display national flags on mainsails as specified in their class rules. If the class rules do not include specification for display of national flags, they shall be displayed in accordance with ISAF National Flags Specifications.



### 3 ELIGIBILITY AND ENTRY

- 3.1 Only competitors invited by the Organizing Authority will be eligible to enter each event. Invitations will be issued in accordance with the 2015 ISAF SWC Qualification System.
- 3.2 Competitors shall confirm acceptance of the invitation to be received by ISAF within 72 hours of the issuance of the invitation. Failure to do this will be grounds for ISAF to revoke the invitation.
- 3.3 For Paralympics events, competitors shall send an email to [swc@isaf.com](mailto:swc@isaf.com) to request an invitation to enter a specific SWC Round.
- 3.4 To remain eligible competitors shall complete the on-line registration and pay the required fees by the date specified in the letter of invitation, unless otherwise agreed by ISAF in writing.
- 3.5 When a competitor accepts an invitation and withdraws within one month of the event without written approval from the OA, ISAF may exclude that competitor from his/her next home continent ISAF Sailing World Cup Round or impose any similar sanction.
- 3.6 ISAF Eligibility shall apply. Each competitor shall be registered as an ISAF Sailor on the ISAF website.
- 3.7 Entries shall be endorsed by the MNA of the competitors entering a boat.
- 3.8 Unless otherwise approved by the IOC or the ISAF Executive, each competitor shall be a national of the country of the Member National Authority (MNA) which enters the boat or endorses the person in charge (as defined by RRS 46). Each competitor shall present proof of their nationality when requested.
- 3.9 Competitors under 18 years of age shall present a signed and completed parent (or guardian) consent and declaration form at each on-site registration.
- 3.10 The regatta is open to boats in events chosen for the 2016 Olympic Sailing Competition, 2016 Paralympic Sailing Competition and Open Kite Boarding as per the table below:

Event	Olympic Sailing	Paralympic Sailing	Open Kite
SWC Hyères	Yes	Yes	No
SWC Weymouth & Portland	Yes	Yes	Yes
SWC Qingdao	Yes	No	No
SWC Final Abu Dhabi	Yes	No	Yes

- 3.11 Spare
- 3.12 Olympic gender requirements will apply for each of the Olympic events.
- 3.13 IFDS Functional Classification
- 3.13.1 Disabled sailors shall have a valid International Classification under IFDS Functional Classification System.



3.13.2 Protest regarding classification may be filed with the on-site classifier not later than “first appearance”. However, any protest will not be decided at the regatta.

3.14 Continental Qualification for Rio 2016 Olympic Games - SWC Qingdao.

3.14.1 For SWC Qingdao, the quotas for the Finn, 470 Men, 470 Women and Nacra 17 will each be increased to enable any MNA from Asia, that has not already qualified for the 2016 Olympic Sailing Competition in that event, to enter one boat into that event.

3.14.2 The deadline to apply for a place under NoR/SI 3.14.1 is 31 July 2015. Applications should be addressed to [swc@isaf.com](mailto:swc@isaf.com)

#### 4. ENTRY FEES

4.1 Fees are stated in EUROS and include any local taxes:

Event	Entry Fee
One Person Events	€ 325
Two Person Events	€ 485
Three Person Events	€ 560

4.2 There is no entry fee for the SWC Final in Abu Dhabi.

#### 5. SCHEDULE

5.1 The schedule for each round will be as follows:

Event	SWC Rounds	SWC Final
Registration for competitors and coaches	Monday	Tuesday
First Briefing for coaches	Tuesday 18:00	Wednesday 18:00
Opening Ceremony	Tuesday 18:30	Wednesday 18:30
Opening Series	Wednesday to Saturday	Thursday to Saturday
Medal Race	Sunday	Sunday
Closing Ceremony	Olympic Classes & Kites	Sunday
	Paralympic Classes	N/A

5.2 The number of races including the medal race, if any, will be as follows:

Event	SWC Rounds	SWC Final
470 M, 470 W, Laser, Laser Radial, Finn	8 + 1 Medal Race	6 + 1 Medal Race
RS:X M, RS:X W, 49er, 49erFX, Nacra 17	12 + 1 Medal Race	9 + 1 Medal Race
2.4mR, Skud 18, Sonar	8	-----

5.3 On the last day of racing, no warning signal will be made after 16:30 h.



## 6 VENUES

Event	SWC Hyères	SWC W & P	SWC Qingdao	SWC Final
Regatta venue	Port de Hyères	Weymouth and Portland National Sailing Academy	Olympic Sailing Centre	Abu Dhabi Yacht Club
Racing area	Rade de Hyères	Portland Harbour and Weymouth Bay	Fushan Bay	Lulu Island

## 7 [DP] [NP] SAFETY REGULATIONS

- 7.1 The race committee will protest a boat for a breach of these safety regulations.
- 7.2 Competitors shall wear personal flotation devices at all times while afloat, except briefly while changing or adjusting clothing or personal equipment.
- 7.3 Boats not leaving the harbour for a scheduled race shall promptly notify the Race Office.
- 7.4 [SP] Before leaving to race on each scheduled racing day, a crew shall personally sign out on the required form.
- 7.5 [SP] Within 30 minutes after returning ashore, a crew shall personally sign in on the required form.
- 7.6 A boat that retires from racing shall notify the race committee before leaving the racing area, or if that is not possible, shall notify the race office as soon as possible after returning ashore but no later than the protest time limit, by completing a retirement declaration form.
- 7.7 Boats shall avoid commercial traffic and shall cross shipping channels at right angles only. Boats not racing shall remain clear of boats that are racing and official boats.
- 7.8 [SP] Flag AP over H displayed ashore means 'Boats shall not leave the harbour. Wait for further instructions.' This changes Race Signals AP over H.
- 7.9 When the race committee displays flag V with repetitive sounds, all official and support boats shall monitor the race committee radio channel for that racing area for search and rescue instructions. The race committee will announce 'Flag Victor' using the designated VHF Channel.

## 8 [DP] CODE OF CONDUCT

- 8.1 Competitors shall comply with any reasonable request from a regatta official.
- 8.2 Competitors shall handle any boats or equipment provided by the organizing authority with proper care and seamanship, and in compliance with any written instructions.

## 9 COMMUNICATIONS WITH COMPETITORS

- 9.1 The ISAF Sailing World Cup Notice Board will be <http://www.sailing.org/worldcup/onb.php>



- 9.2 When a visual signal is displayed over an area or event flag, the signal applies only to that area or event. This changes the Race Signals preamble.

## **10 CHANGES TO SAILING INSTRUCTIONS**

- 10.1 Any change to the format or schedule of races will be posted by 2100 on the day before it will take effect and any change to the sailing instructions will be posted before 0900 on the day it will take effect.
- 10.2 Any reassignment of events to course areas will be posted
- (a) before 1000 on the day it will take effect, or
  - (b) when flag AP is displayed ashore, 30 minutes before flag AP for that event or fleet is removed; or
  - (c) when flag AP is displayed afloat, the course area may be changed. A Race Committee boat will display flag L over the event(s) flag and move to the new Course Area.
- 10.3 Any change to the sailing instructions will be approved by the Principal Race Officer and the ISAF Technical Delegate.

## **11. FORMAT**

- 11.1 The format for each Olympic event will be an opening series and a medal race.
- 11.2 The format for each Paralympic event will be an opening series.
- 11.3 Medal Race
- 11.3.1 A medal race will be scheduled for each Olympic class with 3 or more opening series races completed.
- 11.3.2 The ten boats ranked highest in the opening series will be assigned to compete in the medal race series.
- 11.3.3 Assignments to a medal race will be based on the ranking available at 0900 on the day of the medal race series. The protest committee may extend the time limit.

## **12. EQUIPMENT INSPECTION [DP]**

Boats shall be available for inspection from 10:00h on the day before the first scheduled race (Day Zero).

## **13. THE COURSES**

- 13.1 The courses will be Windward/Leeward or Trapezoid. The diagrams in NoR/SI Addendum B show the courses, the course designations, the approximate angles between legs, the order in which marks are to be passed, and the side on which each mark is to be left.





13.2 To change the next leg of the course, the race committee will (a) lay a new mark, (b) move the finishing line, or (c) move the leeward gate. When a new mark is laid, the original mark will be removed as soon as possible. When in a subsequent change a new mark is replaced, it will be replaced by an original mark.

13.3 Courses will not be shortened. This changes RRS 32.

## 14 THE START

14.1 The starting line will be between a staff displaying an orange flag on the race committee vessel at the starboard end and either

(a) the course side of the port-end inflatable starting mark, or

(b) a staff displaying an orange flag on the race committee vessel at the port end.

14.2 A buoy may be attached to the race committee starting boat anchor line just below keel depth. Boats shall not pass between this buoy and the race committee starting boat at any time. This buoy is part of the race committee starting boat ground tackle. [DP]

14.3 When a starting sequence is in progress, boats whose warning signal has not been made shall avoid the starting area. The starting area is defined as a rectangle 50 meters from the starting line and marks in all directions. [DP]

14.4 Races will be started using the following signals. This changes RRS 26 and Race Signals.

Minutes before starting signal	Visual signal	Sound signal	Means
5	White flag with number 5	One	Warning signal
4	Blue flag with number 4	One	Preparatory signal
3	Pink flag with number 3	One	Three minutes
2	Red flag with number 2	One	Two minutes
1	Yellow flag with number 1	One long	One minute
0	Green flag	One	Start signal

14.5 When flag U has been displayed no later than the warning signal, no part of a boat's hull, crew or equipment shall be in the triangle formed by the ends of the starting line and the first mark during the last minute before her starting signal. If a boat breaks this rule and is identified, she shall be disqualified without a hearing but not if the race is restarted or re-sailed. This changes RRS 26, 63.1 and A5. RRS 29.1 (Individual Recall) does not apply. The scoring abbreviation under this rule is OCS. This changes A11 Scoring Abbreviations.

14.6 When a black flag is displayed in accordance with RRS 30.3 it shall be displayed no later than the warning signal.



14.7 To alert boats that a race or sequence of races will begin soon, the orange starting line flag will be displayed with one sound at least five minutes before a warning signal is made.

## 15 THE FINISH

15.1 The finishing line will be between a staff displaying an orange flag on the race committee vessel and either:

- (a) the course side of the nearby inflatable finishing mark, or
- (b) a staff displaying an orange flag on the nearby race committee vessel.

## 16 TIME LIMITS AND TARGET TIMES

16.1 For opening series, time limits and target times are as follows:

Event	Time Limit	Mark 1 Time Limit	Finish Window	Target Time
470 M, 470 W, Laser, Laser Radial, Finn	75	25	15	50
Nacra 17	50	20	10	30
49er and 49er FX	50	20	10	35
RS:X M, RS:X W	45	20	10	20-25
Paralympic Events	90	30	20	50

16.2 For medal race series, time limits and target times are as follows:

Event	Time Limit	Mark 1 Time Limit	Finish Window	Target Time
49er, 49er FX, RS:X M, RS:X W, Nacra 17	40	None	5	20
All other classes	40	10	10	25

16.3 If no boat rounds Mark 1 within the Mark 1 time limit, the race committee shall abandon the race.

16.4 Any boat that does not finish with the Finish Window (time after the first boat finishes) shall be scored DNF without a hearing. This changes RRS 63.1 and A5.

## 17 REPLACEMENT OF CREW [DP]

Substitution of competitors will not be allowed without prior written approval of the race committee and shall comply with any restrictions in the NoR/SI

## 18 SCORING

18.1 The Low Point System of RRS Appendix A will apply. RRS B8 is deleted.





- 18.2 When fewer than three opening series races have been completed, a boat's series score will be the total of her race scores. When three or more opening series races have been completed, a boat's score will be the total of her race scores excluding her worst score. However, the score from any medal race will not be excluded.
- 18.3 A boat starting later than 4 minutes after her starting signal will be scored Did Not Start. This changes RRS A4 and A5.
- 18.4 RRS A4.2 is changed so that those scores are based on
- (a) The number of boats assigned to compete in a single series, or
  - (b) For the medal race, the number of boats assigned to the medal race.
- 18.5 One race is required to be completed to constitute a regatta.
- 18.6 For the medal race RRS A4.1 is changed so that the points are doubled. RRS A4.2 is changed so that the scores are based on the number of boats assigned in that race and then doubled.
- 18.7 For boats assigned to compete in the medal race, ties will be broken by the medal race score. This changes RRS A8. For tied boats with the same points score in the medal race, ties will be broken applying RRS A8 to the opening series scores.
- 18.8 A boat assigned to compete in the medal race shall make a genuine effort to start, sail the course and finish. The penalty for a breach of this instruction will be ranking the boat tenth in the regatta. If there are two such boats, they will be ranked ninth and tenth, in order of their opening-series ranks, and so on. This changes RRS A2.
- 18.9 The boats competing in the medal race shall be scored highest in the regatta. This may not apply to a boat disqualified under RRS 5, 6 or 69.
- 18.10 To request correction of an alleged error in posted race or series results, a boat may complete a scoring enquiry form available at the race office.

## **19. INTERNATIONAL JURY. PROTESTS, PENALTIES AND REQUESTS FOR REDRESS**

- 19.1 An International Jury will be appointed in accordance with rule RRS 91(b).
- 19.2 Protest forms are available at the Race Office or Jury Office. Protests and requests for redress or reopening shall be delivered to the Jury Office within the appropriate time limit.
- 19.3 Notices will be posted within 30 minutes of the protest time limit to inform competitors of hearings in which they are parties or named as witnesses. Hearings will be held beginning at the time posted. Hearings may be scheduled to begin up to 30 minutes before the end of protest time Limit.
- 19.4 Notices of protests by the race committee or protest committee will be posted to inform boats under RRS 61.1(b).



- 19.5 A list of boats that have been penalized under Appendix P for breaking RRS 42 and under SI 19.7 will be posted.
- 19.6 Penalties for breaches of the ER, Support Team Regulations, class rules, RRS 55 or rules in the NoR and SIs marked [DP] or [SP] should the case go to a hearing, are at the discretion of the protest committee.
- 19.7 For breaches of NoR/SI marked [SP], the race committee may apply a standard penalty without a hearing. A list of these breaches and the associated standard penalties will be posted on the Official Notice Board. However, the race committee may protest a boat when they consider the standard penalty to be inappropriate. A boat that has been penalised with a standard penalty can neither be protested for the same incident by another boat nor can another boat request redress for this race committee action. This changes RRS 60.1, 63.1 and Appendix A5.
- 19.8 On the last day of opening series, or on the last scheduled day of racing, a request for reopening a hearing shall be delivered
- (a) within the protest time limit if the requesting party was informed of the decision on the previous day;
- (b) no later than 30 minutes after the requesting party was informed of the decision on that day;
- This changes RRS 66.
- 19.9. On the last day of the opening series, or on the last scheduled day of racing, a request for redress based on a jury decision shall be delivered no later than 30 minutes after the decision was posted. This changes RRS 62.2.

## 20 CLASS FLAGS

Class flags will be class insignia on the following background:

Event	Class Insignia	Background Colour
Men's Windsurfer	RS:X	White
Women's Windsurfer	RS:X	Light Blue
Men's One Person Dinghy	Laser	White
Women's One Person Dinghy	Laser Radial	Light Blue
Heavyweight Men's One Person Dingy	Finn	White
Men's Skiff	49er	White
Women's Skiff	49er FX	Light Blue
Men's Two Person Dinghy	470	White



Women's Two Person Dinghy	470	Blue
Mixed Two Person Multihull	Nacra 17	White
Paralympic One Person Keelboat	2.4 mR	White
Paralympic Two Person Keelboat	Skud 18	White
Paralympic Three Person Keelboat	Sonar	White
Formula Kite Open	Kite	Green

## 21. SUPPORT TEAM

All support teams shall be registered with the organizing authority at [http://www.sailing.org/worldcup/sailorinfo/coach\\_registration.php](http://www.sailing.org/worldcup/sailorinfo/coach_registration.php) and will be required to comply with local legislation and the Support Team Regulations. The organizing authority may refuse registrations and accept later registrations at their sole discretion.

## 22 RADIO COMMUNICATIONS

A boat shall neither make radio transmissions while racing nor receive radio communications not available to all boats, except in an emergency or when using equipment provided by the race committee. This restriction also applies to mobile telephones.

## 23 PRIZES AND SOCIAL FUNCTION REQUIREMENTS

23.1 ISAF SWC Medals will be awarded to the top 3 boats in each event.

23.2 If a competitor whom qualified for the medal race, leaves the event before the conclusion of the closing ceremony or, if other competitor, leaves the venue before the Saturday of the Round, ISAF may exclude that competitor from his/her next home continent ISAF Sailing World Cup Round or impose any similar sanction.

23.3 ISAF may reduce or remove a prize in the case of misconduct or refusal to comply with any reasonable request, including attendance at official functions.

## 24 [NP] [DP] INSURANCE

24.1 Each 'person in charge' (see RRS 46) shall hold a valid insurance certificate showing proof of third-party liability coverage of at least EUROS 1,500,000 (or equivalent) per incident.

24.2 The Organizing Authority is not responsible for verifying the status or validity of certificates.

## 25 RISK STATEMENT

Competitors and support team participate in the regatta entirely at their own risk and they are reminded of the provisions of RRS 4, Decision to Race. Sailing is by its nature an unpredictable



sport and therefore involves an element of risk. By taking part in the event, each competitor agrees and acknowledges that:

- a) They are aware of the inherent element of risk involved in the sport and accept responsibility for the exposure of themselves, their crew and their boat to such inherent risk whilst taking part in the event;
- b) They are responsible for the safety of themselves, their crew, their boat and their other property whether afloat or ashore;
- c) They accept responsibility for any injury, damage or loss to the extent caused by their own actions or omissions;
- d) By participating in any race, they are satisfied that their boat is in good order, equipped to sail in the event and they are fit to participate;
- e) The provision of a race management team, patrol boats, umpires and other officials and volunteers by the organiser does not relieve them of their own responsibilities;
- f) The provision of patrol boat cover is limited to such assistance, particularly in extreme weather conditions, as can be practically provided in the circumstances.

## **26 [DP] MEDIA**

26.1 By participating in an event of the ISAF Sailing World Cup competitors automatically grant to the organizing authority, ISAF and their sponsors, the right in perpetuity to make, use and show, from time to time at their discretion, any motion pictures and live, taped or filmed television and other reproductions of the athlete during the period of the competition without compensation.

26.2 Boats may be required to carry cameras, sound equipment or positioning equipment as specified by the Organizing Authority.

26.3 The top three competitors as well as the individual race winners may be required to attend a media press conference each day.

26.4 Competitors may be required for interviews at the regatta.

## **27 [SP] TRACKING EQUIPMENT**

27.1 Before Competition/before Racing

- a) [DP] A tracking socket will be supplied to all competitors from their assigned tracking desk before the first racing day. Competitors shall securely mount the socket to their boat as per the supplied instructions.
- b) Athletes shall collect a tracking module from their assigned tracking desk, which must be securely fitted to the tracking socket before racing each day.

27.2 Return to Shore: Competitors shall return the tracking module within the protest time limit to the same place that they received it.



## **Addendum A – Prescriptions of the Member National Authorities**

### **A1 ISAF SWC Hyères - Fédération Française de Voile**

#### **A1.1 RRS 64.3 DECISIONS ON PROTESTS CONCERNING CLASS RULES**

The jury may ask the parties to the protest, prior to checking procedures, a deposit covering the cost of checking arising from a protest concerning class rules.

#### **A1.2 RRS 67 DAMAGES**

Any question about or request of damages arising from an incident involving a boat bound by the Racing Rules of Sailing or International Regulation to Prevent Collision at Sea depends on the appropriate courts and will not be dealt by the jury.

#### **A1.3 RRS 70.5 APPEALS AND REQUESTS TO A NATIONAL AUTHORITY**

In such circumstances, the written approval of the Fédération Française de Voile shall be received before publishing the notice of race and shall be posted on the official notice board during the event.

### **A2 ISAF SWC Weymouth & Portland - Royal Yachting Association**

#### **A2.1 RSS 5 ANTI-DOPING**

The national authority procedural rules required by ISAF regulation 21.14 to implement the World Anti-Doping Code through ISAF regulation 21 are the RYA Rules and Procedures for Anti-Doping, as published on the RYA website.

#### **A2.2 RRS 67 DAMAGES**

1. Any claim for damages arising from an incident while a boat is bound by the Racing Rules of Sailing shall be subject to the jurisdiction of the courts and not considered by a protest committee.
2. A boat that takes a penalty or retires does not thereby admit liability for damages or that she has broken a rule.

#### **A2.3 RRS 86.3 CHANGES TO THE RACING RULES**

An organizing authority wishing to develop and test a rule change shall obtain prior approval from the RYA. The organizing authority shall promptly report the results of the test to the RYA.

#### **A2.4 RRS 88.2 CHANGES TO NATIONAL AUTHORITY PRESCRIPTIONS**

Notices of race and sailing instructions shall not change a prescription of the RYA. However, when an international jury has been appointed for an event, only the prescriptions of rules 5, 67, 86.3 and 88.2 shall apply.



**A3 ISAF SWC Qingdao - Chinese Yachting Association**

No national prescriptions will apply

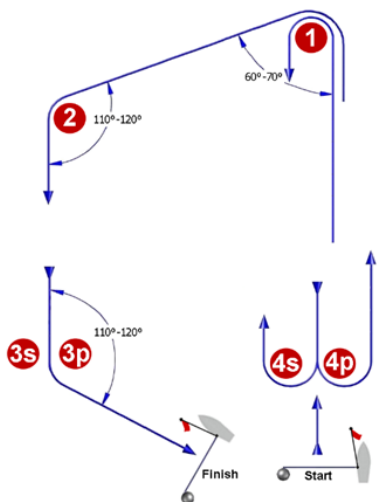
**A4 ISAF SWC Final Abu Dhabi - UAE Sailing and Rowing Federation**

No national prescriptions will apply



# ADDENDUM B - COURSE ILLUSTRATIONS

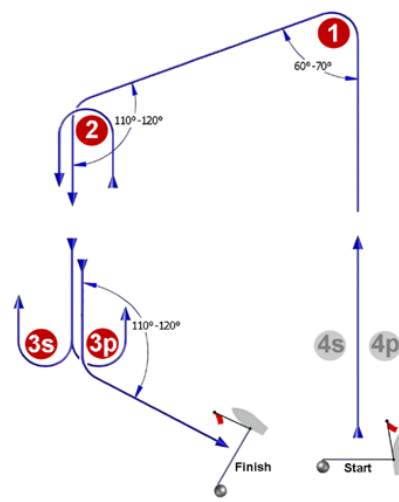
## **I**



Course: Inner Trapezoid

Signal	Mark Rounding Order
I2	Start - 1 - 4s/4p - 1 - 2 - 3p - Finish
I3	Start - 1 - 4s/4p - 1 - 4s/4p - 1 - 2 - 3p - Finish
I4	Start - 1 - 4s/4p - 1 - 4s/4p - 1 - 4s/4p - 1 - 2 - 3p - Finish

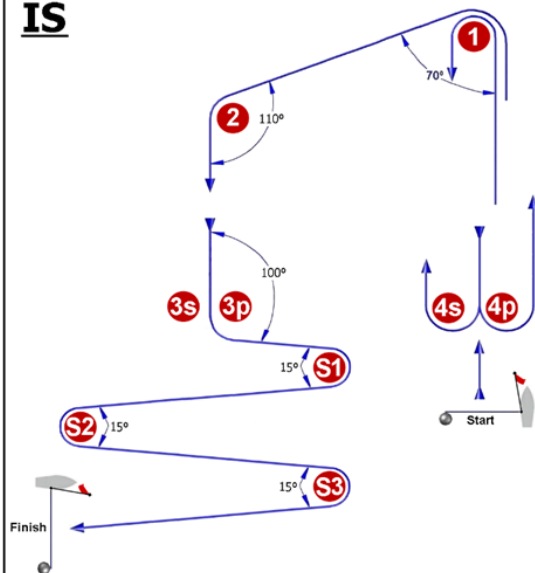
## **O**



Course: Outer Trapezoid

Signal	Mark Rounding Order
O2	Start - 1 - 2 - 3s/3p - 2 - 3p - Finish
O3	Start - 1 - 2 - 3s/3p - 2 - 3s/3p - 2 - 3p - Finish
O4	Start - 1 - 2 - 3s/3p - 2 - 3s/3p - 2 - 3s/3p - 2 - 3p - Finish

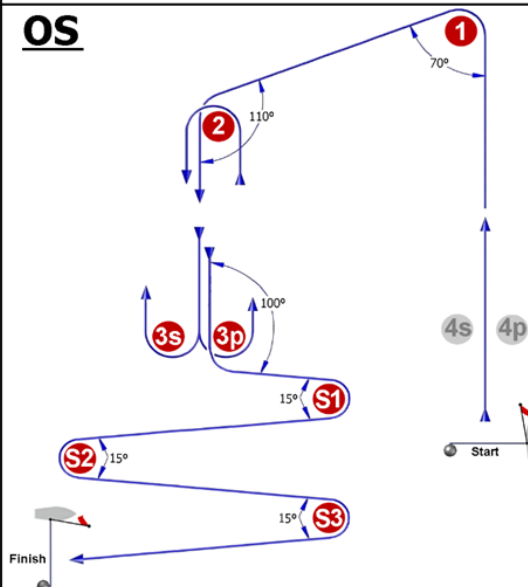
## **IS**



Course: Inner Slalom

Signal	Mark Rounding Order
IS2	Start - 1 - 4s/4p - 1 - 2 - 3p - S1 - S2 - S3 - Finish
IS3	Start - 1 - 4s/4p - 1 - 4s/4p - 1 - 2 - 3p - S1 - S2 - S3 - Finish
IS4	Start - 1 - 4s/4p - 1 - 4s/4p - 1 - 4s/4p - 1 - 2 - 3p - S1 - S2 - S3 - Finish

## **OS**



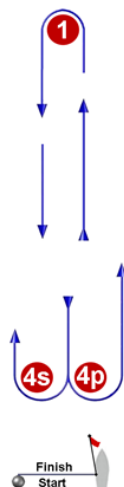
Course: Outer Slalom

Signal	Mark Rounding Order
OS2	Start - 1 - 2 - 3s/3p - 2 - 3p - S1 - S2 - S3 - Finish
OS3	Start - 1 - 2 - 3s/3p - 2 - 3s/3p - 2 - 3p - S1 - S2 - S3 - Finish
OS4	Start - 1 - 2 - 3s/3p - 2 - 3s/3p - 2 - 3s/3p - 2 - 3p - S1 - S2 - S3 - Finish



# ADDENDUM B - COURSE ILLUSTRATIONS

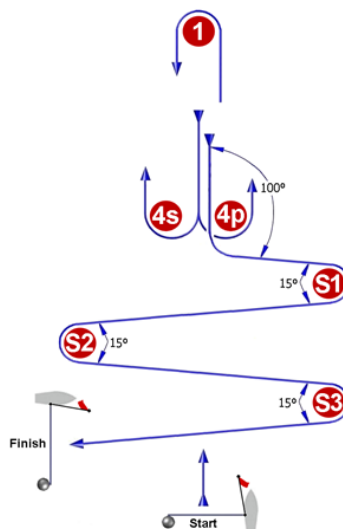
**L**



Course: Windward/Leeward

Signal	Mark Rounding Order
L2	Start - 1 - 4s/4p - 1 - Finish
L3	Start - 1 - 4s/4p - 1 - 4s/4p - 1 - Finish
L4	Start - 1 - 4s/4p - 1 - 4s/4p - 1 - 4s/4p - 1 - Finish

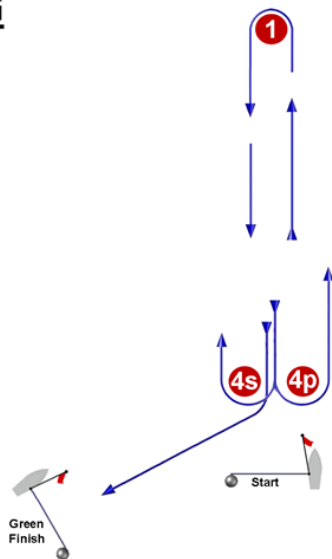
**LS**



Course: Windward/Leeward With Slalom Finish

Signal	Mark Rounding Order
LS2	Start - 1 - 4s/4p - 1 - 4p - S1 - S2 - S3 - Finish
LS3	Start - 1 - 4s/4p - 1 - 4s/4p - 1 - 4p - S1 - S2 - S3 - Finish
LS4	Start - 1 - 4s/4p - 1 - 4s/4p - 1 - 4s/4p - 1 - 4p - S1 - S2 - S3 - Finish

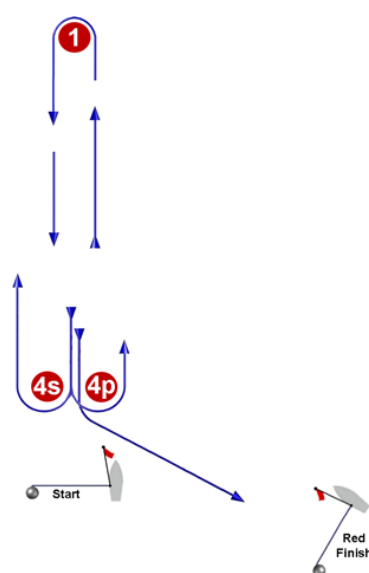
**LG**



Course: Windward/Leeward

Signal	Mark Rounding Order
LG2	Start - 1 - 4s/4p - 1 - 4s - Finish
LG3	Start - 1 - 4s/4p - 1 - 4s/4p - 1 - 4s - Finish
LG4	Start - 1 - 4s/4p - 1 - 4s/4p - 1 - 4s/4p - 1 - 4s - Finish

**LR**

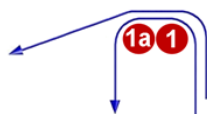


Course: Windward/Leeward

Signal	Mark Rounding Order
LR2	Start - 1 - 4s/4p - 1 - 4p - Finish
LR3	Start - 1 - 4s/4p - 1 - 4s/4p - 1 - 4p - Finish
LR4	Start - 1 - 4s/4p - 1 - 4s/4p - 1 - 4s/4p - 1 - 4p - Finish

# ADDENDUM B - COURSE ILLUSTRATIONS

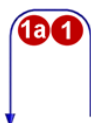
## **IA**



Course: Same As Course I Except With Offset Mark 1A

Signal	Mark Rounding Order
<b>IA2</b>	Start - 1 - 1a - 4s/4p - 1 - 1a - 2 - 3p - Finish
<b>IA3</b>	Start - 1 - 1a - 4s/4p - 1 - 1a - 4s/4p - 1 - 1a - 2 - 3p - Finish
<b>IA4</b>	Start - 1 - 1a - 4s/4p - 1 - 1a - 4s/4p - 1 - 1a - 4s/4p - 1 - 1a - 2 - 3p - Finish

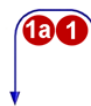
## **LA**



Course: Same As Course L Except With Offset Mark 1A

Signal	Mark Rounding Order
<b>LA2</b>	Start - 1 - 1a - 4s/4p - 1 - 1a - Finish
<b>LA3</b>	Start - 1 - 1a - 4s/4p - 1 - 1a - 4s/4p - 1 - 1a - Finish
<b>LA4</b>	Start - 1 - 1a - 4s/4p - 1 - 1a - 4s/4p - 1 - 1a - 4s/4p - 1 - 1a - Finish

## **LGA**



Course: Same As Course LG Except With Offset Mark 1A

Signal	Mark Rounding Order
<b>LGA2</b>	Start - 1 - 1a - 4s/4p - 1 - 1a - 4s - Finish
<b>LGA3</b>	Start - 1 - 1a - 4s/4p - 1 - 1a - 4s/4p - 1 - 1a - 4s - Finish
<b>LGA4</b>	Start - 1 - 1a - 4s/4p - 1 - 1a - 4s/4p - 1 - 1a - 4s/4p - 1 - 1a - 4s - Finish

## **LRA**

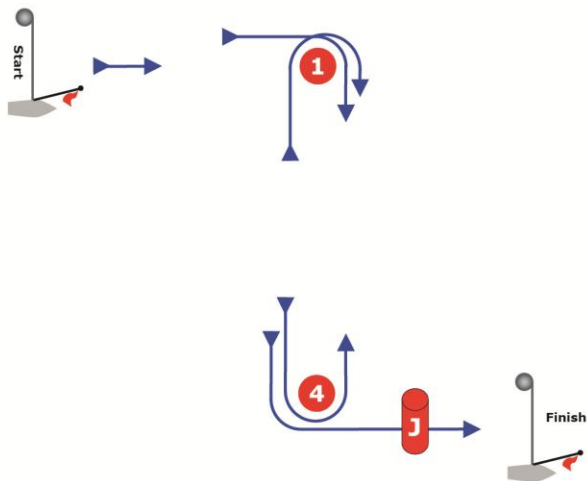


Course: Same As Course LR Except With Offset Mark 1A

Signal	Mark Rounding Order
<b>LRA2</b>	Start - 1 - 1a - 4s/4p - 1 - 1a - 4p - Finish
<b>LRA3</b>	Start - 1 - 1a - 4s/4p - 1 - 1a - 4s/4p - 1 - 1a - 4p - Finish
<b>LRA4</b>	Start - 1 - 1a - 4s/4p - 1 - 1a - 4s/4p - 1 - 1a - 4s/4p - 1 - 1a - 4p - Finish

ADDENDUM B - COURSE ILLUSTRATIONS

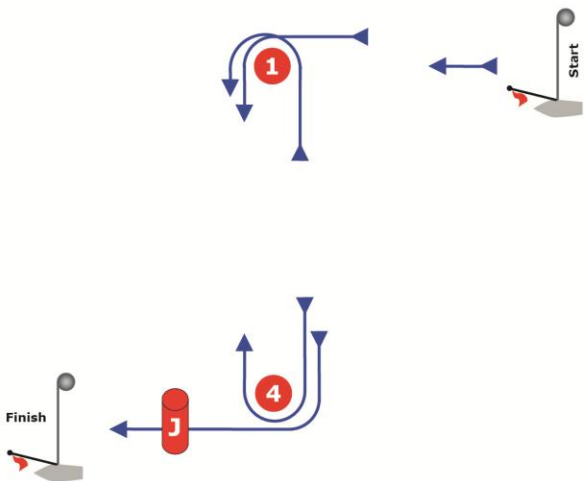
**KEP**



Course: Short Track Course

Signal	Mark Rounding Order
KEP 1	Start - 1 - 4p - 1s - 4p - Jump - Finish
KEP 2	Start - 1 - 4p - 1s - 4s - 1s - 4p - Jump - Finish

**KES**



Course: Short Track Course

Signal	Mark Rounding Order
KEP 1	Start - 1 - 4s - 1p - 4s - Jump - Finish
KEP 2	Start - 1 - 4s - 1p - 4s - 1p - 4s - Jump - Finish

## **Addendum C – Formula Kite Open**

### **C1 RULES**

- C1.1 RRS Appendix F shall apply, except as changed by these NoR/SI.
- C1.2 The changes to the RRS approved by the IKA shall apply. They are detailed in section C28 of this addendum.
- C1.3 The NoR/SI for the ISAF Sailing World Cup apply unless changed by a rule in this Addendum. If there is a conflict between the Addendum C and the general NoR/SI, the Addendum C will take precedence.

### **C7 SAFETY REGULATIONS [SP] [NP]**

- C7.1 NoR/SI 7.4 and 7.5 do not apply.
- C7.2 When stored on the beach in the launching area, hulls shall be placed with the fins down towards the sand.

### **C11 FORMAT**

#### **C11.1 Stage 1 – Seeding Stage**

- (a) The format will be fleet racing.
- (b) A maximum of 6 races are scheduled.
- (b) All boards in Stage 1 qualify for Stage 2

#### **C11.2 Stage 2 – Round Robin Stage**

- (a) The assignments to heats in Stage 2 will be based on the seeding established in Stage 1. If Stage 1 is not sailed, seeding will be determined based on ISAF world ranking positions as for 27 February, with positions 1 to 20 assigned to male competitors and 21 to 24 assigned to female competitors.
- (b) Assignments to each flight or heat shall be posted on the Official Notice Board on Thursday 11 June by 1000 h.
- (c) The top 10 placed boards in Stage 2 qualify for the Medal Stage, the others will be awarded places 11<sup>th</sup> to 24<sup>th</sup>.

#### **C11.4 Stage 3 – Medal Races**

- (a) Boards placed 2<sup>nd</sup>, 3<sup>rd</sup>, 6<sup>th</sup>, 7<sup>th</sup>, 10<sup>th</sup> in Stage 2 are assigned to Semi Final 1
- (b) Boards placed 1<sup>st</sup>, 4<sup>th</sup>, 5<sup>th</sup>, 8<sup>th</sup>, 9<sup>th</sup>, in Stage 2 are assigned to Semi Final 2
- (c) Each Semi Final will consist of two heats.
- (d) The top two placed boards in each Semi Final shall qualify for the Final, the others will be awarded places 5<sup>th</sup> to 10<sup>th</sup>.
- (e) The final shall be a single race and positions in this race shall determine the top four positions overall.

### **C14 THE START**

- C14.1 For Stage 2 and 3, races will be started using the following signals. This changes RRS26 and Race Signals.



Minutes before starting signal	Visual signal	Sound signal	Means
3	Pink flag with number 3	One	Warning signal
2	Red flag with number 2	One	Preparatory signal
1	Yellow flag with number 1	One long	One minute
0	Green flag	One	Start signal

C14.2 No part of a boat's hull shall be in the triangle formed by the ends of the starting line and the first mark during the last minute before her starting signal. If a boat breaks this rule and is identified, she shall be disqualified without a hearing but not if the race is restarted or re-sailed. This changes RRS 26 and A5. Individual recall does not apply. The scoring abbreviation for penalty under this SI is OCS. This changes A11 Scoring Abbreviations

## C16 TIME LIMITS AND TARGET TIMES

Time limits and target times are as follows:

Stage	Time Limit	Mark 1 Time Limit	Finish Window	Target Time
Stage 1	30	10	10	12
Stage 2 & 3	10	2	2	4

## C18 SCORING

C18.1 For Stage 2 and 3, a Kiteboard starting later than one minute after her starting signal will be scored Did Not Start. This changes rules A4 and A5.

C18.2 Stage 1 – Seeding Stage

(a) The points scored in each race will be as follows:

Finishing Position	Points
1	25
2	24
3	23
etc	etc

(b) A boat that did not start, did not finish, retired or was disqualified shall be scored points for the finishing place one less than the number of boats entered in the series. If a board was disqualified or retired for causing a tangle, she shall be scored zero points. If this happens a subsequent time, her score shall not be excludable from the overall stage score.



- (c) When fewer than three opening series races have been completed, a boat's series score will be the total of her race scores. When three or more opening series races have been completed, a boat's score will be the total of her race scores excluding her worst score.

### C18.3 Stage 2 – Round Robin Stage

- (a) The points scored in each heat will be as follows:

Round Robin Position	Points
1	10
2	7
3	5
4	4
5	3
6	2
DNF, DNS, DSQ, RET, OCS	1
DSQ/RET for causing a tangle	0

- (b) If at the end of the round robin stage some boards have more heat scores than others, scores for the most recent heats will be excluded so that all boards have the same number of heats scores.
- (c) A board's series score will be the total of her heat scores, without any discard.

### C18.4 Stage 3 – Medal Stage

- (a) Semi Finals

- (i) Boards will carry forward the following scores from Stage 2

Position	Points	Position	Points
1 and 2	10	7 and 8	4
3 and 4	7	9 and 10	3
5 and 6	5		

- (ii) in each heat boards will score points as in C18.3(a).
- (iii) the score for each board will be the total of her score carried forward from Stage 2 plus all her races in the Semi Final.
- (b) Finals – see C11.4 (e).

### C18.5 Tiebreaks

- (a) In Stage 1 ties will be broken in accordance with RRS A8
- (b) In stage 2, ties will be broken in favour of the board with the highest position in Stage 1.
- (c) In Stage 3, Semi Finals, ties will be broken in favour of the board with the highest position in Stage 2.



## C28 RRS CHANGES

C28.1 In Rules 29.1, 30.1, 30.2 and 30.3, change 'crew or equipment' to 'or competitor'.

C28.2 Add new rule F 3.31, Touching a *mark*:

"While *racing*, a kiteboard shall not touch a windward *mark* or windward gate.

C28.3 Rule F4.44.1 is changed to read:

"A kiteboard may take a One-Turn Penalty when she may have broken rule F3.31, or one or more rules of Part 2 in an incident while *racing*. Sailing instructions may specify the use of some other penalty. However,

- (a) when a kiteboard may have broken a rule of Part 2 and rule F3.31 in the same incident she need not take the penalty for breaking rule F3.31;
- (b) if the kiteboard caused injury, serious damage or a tangle or, despite taking a penalty, gained a significant advantage in the race or series by her breach her penalty shall be to retire.

C28.4 Rule F4.44.2 is renamed to "One-Turn-Penalty and changed to read:

"After getting well clear of other kiteboards as soon after the incident as possible, a kiteboard takes a One-Turn Penalty by promptly making a turn with her hull in the water including one completed tack and one completed gybe. Forward motion shall be established between tack and gybe (or vice versa) with the sailor on the correct side of the hull in normal sailing position. When a kiteboard takes the penalty at or near the finishing line, she shall sail completely to the course side of the line before finishing

C28.5 In Rules 61.1(a)(4) and 62.1(b), change 'damage' to ' damage or a tangle'.

C28.6 At the end of Rule 62.1(b) add: "however, if prior to the incident, there is a clear risk of a situation that could cause an entanglement that a competitor could reasonably anticipate and avoid, and the competitor fails to do so, or if a competitor through his own actions creates a situation that carries a clear risk of entanglement, the competitor shall not be eligible for redress"

C28.7 Delete the last sentence of Rule F5.61.1 (a)

C28.8 Delete Rule F5.62.1 (e)

C28.9 Add new Rule 64.1(d):

"When a kiteboard breaks a rule of part 2 and, as a result, causes a tangle for which redress is given, she shall be scored RCT if she retired or DCT if she is disqualified, equalling a score of 0 points.

C28.10 For races of the stage 3 rules 61.2 and 65.2 are deleted and rule 63.6 is changed to:

"63.6 Protests and requests for redress need not be in writing; they shall be made orally to a member of the protest committee as soon as reasonably possible following the heat. The protest committee may take evidence in any way it considers appropriate and may communicate its decision orally."

C28.10 RRS F 8 A.8 is deleted.





## Addendum D – Equipment

- D1. Failure of supplied equipment will not be grounds for redress. This changes rule 62.1(a).
- D2 A penalty may be given or the use of the supplied equipment may be withdrawn if, in the opinion of the organizing authority, a competitor treats or handles the equipment without care or in a manner which causes or is likely to cause damage to the equipment.
- D3 Supplied equipment will be available from midday on 24 October 2015.
- D4 Damage Deposit:  
A damage deposit of USD 400 for one person boats and USD 800 for two person boars (cash or credit card authorization) will be required for registration at the venue. In case of damage to any equipment, the competitor may be required to pay an additional amount in order to maintain the damage deposit balance to its original amount.
- D5 The organizing authority shall not supply compasses or other tactical devices, wind indicators, personal flotation devices (PFD's), trapeze harnesses, hiking pants, wet or dry suits or any other personal gear.
- D6 Competitors may bring and use the following items: shockcords, compass, wind indicators, including yarn or thread (may be tied or taped anywhere on the equipment, provided their fitting does not mark, pierce or damage the hull, deck, sails or spars).
- D7 Adhesive tape may be used anywhere above the waterline, but the tape needs to be removable after the event without leaving any permanent damage. There shall be no writing with permanent markers directly on the supplied equipment. No wax shall be applied. Hulls, centreboards and rudders may be cleaned, but only with water and ordinary soap.
- D8 For Laser and Laser Radial only:
- a) Competitors shall bring their own sail.
  - b) Competitors shall be supplied with a fully fitted Laser hull including the deck block fitting and the two single blocks and cleats for the deck led cunningham and outhaul systems.
  - c) Competitors may bring and use their own lines, sheet and blocks (including ratchet block, outhaul, cunningham, traveller and vang systems) and tiller/tiller extension.
  - d) The boats shall be supplied with mini side deck cleats for the main sheet, centreboard, rudder, mast and boom.
- D9 For 49er and 49er FX only:
- a) Competitors shall sail with OA supplied hull, foils, rudder stock/tiller mast, boom and gennaker pole.
  - b) Competitors shall bring their own sails, footstraps, and tiller extensions.
  - c) Footsteps: pre-drilled holes shall be provided in all wings. Competitors shall bring footstraps that will fit the drilling plan that is the same for every boat. Additionally, competitors are expected to leave the footstraps on the boats at the end of the regatta.
  - d) Vang, Cunningham, Tack Line, and Spin Pole Extender: Competitors shall bring their own lines and shock cord for these systems. The OA will provide the blocks and



hardware. Competitors may set up these systems as they prefer and are expected to leave the lines and shock cord from these systems on the boat at the end of the regatta.

- e) Grip Tape: teams may apply grip tape to the boats. All grip tape applied shall be left on the boats at the end of the regatta.
- f) Remaining lines: All remaining lines shall be provided by the OA, but competitors may use their own lines and halyards. Any lines and halyards provided by competitors may be taken away by the teams at the end of the event.

D10 For Nacra 17, RS:X and Kitesurfing only:.

Competitors shall bring their own equipment.

D11 For Finn and 470 only:

D11.1 Teams will have the option of bringing their own equipment:

D11.2 There are charter boats that will be supplied as follows:

- a) For Finn only:
  - i There are 9 boats available and they will be allocated on a first come first served basis.
  - ii Competitors shall bring their own sails and masts. Supplied mast may be available upon request to the OA.
  - iii Competitors shall be supplied with a fully fitted boat including ropes, systems, regulations, centreboard, rudder, boom, tiller and tiller extension.
  - iv Competitors may bring and use the boom, main sheet, rudder, tiller, tiller extension, centerboard pin and mast chocks
- b) For 470 only:
  - i There are 16 boats available that will be allocated on a first come first served basis.
  - ii Competitors shall bring their own sails, including the jib wire.
  - iv Competitors will be supplied with a fully fitted 470, including ropes, systems, centreboard, rudder, tiller and tiller extension.
  - v Boats will be supplied with a fully rigged Superspars mast including trapezes system, boom and spinnaker pole.

